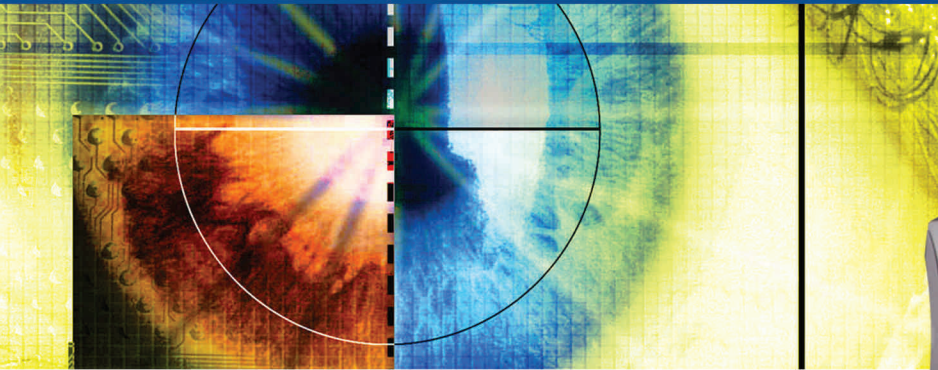


CDVS-7516

Digital Video Recorder

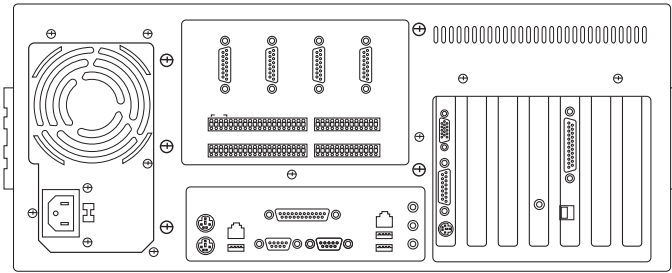


- 16 video inputs with looping outputs
- MPEG4 compression
- 720 x 480 (4 CIF) resolution
- 480fps display and record rates
- 16 audio channels
- Two-way communication
- Listen to live and recorded audio at DVR and remotely
- Spot monitor output
- 16 input sensors and 16 output controls
- Multi-zone motion detection for every camera
- Adjustable sensitivity per motion zone
- Up to 3.2TB of internal Cool Drive storage
- Multiplatform remote software allows administration of digital and embedded DVRs
- Complete remote administration
- Quad Plex – view live and recorded video simultaneously
- Available in server tower or rack mount case

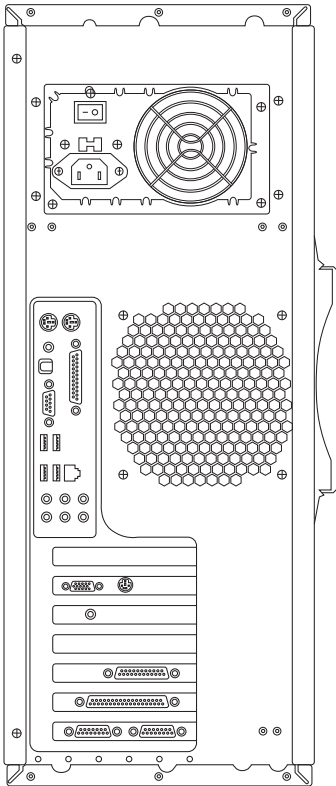


We see solutions.

Product Data: CDVS-7516 Digital Video Recorder



Rack Mount Unit, Rear Panel



PC Tower, Rear Panel

Model Number	CDVS-7516
Camera Inputs	16 (BNC Type)
Looping Outputs	Yes (16 Ch)
Audio Inputs	16 (RCA Type)
Video Outputs	PC Monitor (VGA) / Analog Monitor
Screen Division	1 / 4 / 6 / 8 / 9 / 10 / 13 / 16
Display Speed	Max 480FPS (Real-Time)
Recording Speed	Max 480FPS
Resolution	360 x 240 (1CIF) / 720 x 240 (2CIF) / 720 x 480 (4CIF)
Available Recording Rates	360 x 240 - 480FPS Max / 720 x 240 - 240FPS Max / 720 x 480 - 120FPS Max
Compression Type	MPEG-4
Sensor & Relay	16 Sensor Inputs / 16 Relay Outputs
PTZ Control	RS-485 / RS-422 / RS-232C
Network	10 / 100 Base TX Ethernet / Modem
HDD Capacity	Up to 3.2TB Internal
Compressed File Size	360 x 240 (1~5kb) / 720 x 240 (2~10kb) / 720 x 480 (4~20kb)
Recording Mode	Continuous / Motion Detection / Sensor / Sensor or Motion / Emergency
Recording Schedule	Schedule Recording Mode by Camera / Day / Hour (Individual Settings)
Remote Transmission	Live Video / Replay / Remote Storage / Notification of Events
Remote Control	PTZ / Emergency Recording / Relay Output / Administration
Storage Temp / Humidity	-4 ~ 140°F / 20 ~ 95% RH
Operation Temp / Humidity	41 ~ 104°F / 20 ~ 80% RH

Specifications subject to change



We see solutions.